

In this month's Hydrafile:**Product Information**

Hydraulic systems create pressure and force, and that means danger exists to those using and servicing hydraulic machinery.

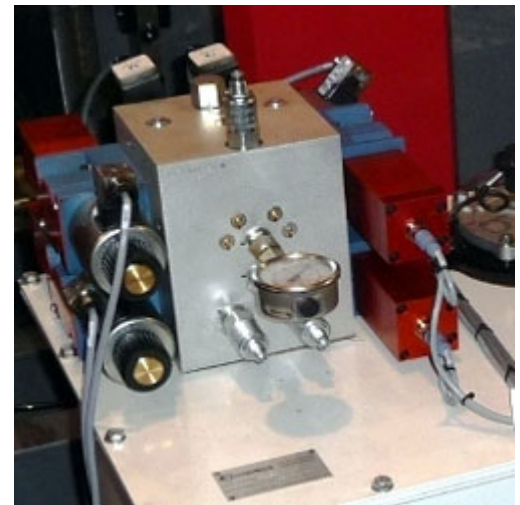
Safety regulations require certain hydraulic equipment to provide a means to minimise the danger and protect people from injury. In particular Hyspecs stocks monitored safety valves and accumulator unloading valves which were designed to do just this.

Monitored Safety Valves

Monitored safety valves are used in Australian Risk Category 4 applications. By using these monitored valves to confirm that the directional hydraulic control valves have been isolated, the powerpack pump can be left running while the operator has access to the machinery.

The valve spool position is monitored by a limit switch. Two cetop valves are used in series typically in a "block & bleed" configuration. The limit switch confirms that the valve has shifted into its fail safe state – in this safe state pressure from the hydraulic pump is blocked and pressure to the directional hydraulic control valves is bled to tank.

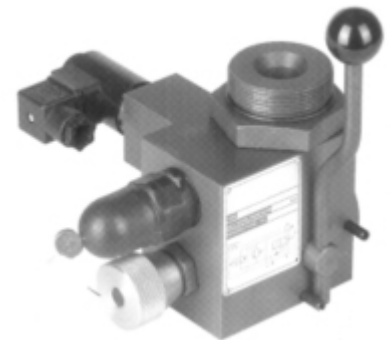
Hyspecs designs custom manifolds that incorporate these valves along with other cartridge valving. For more information call [Craig Kemp](#), our Industrial Project Engineer, on +64 9 274 9985 or drop him an email by [clicking here](#).

**Accumulator Unloading Valves**

NZ law requires pressure vessels to meet AS/NZS1210 and certain hydraulic accumulators and their related valving fall under these regulations. Where required all of Hyspecs accumulators and associated valving and adaptors are manufactured to meet these regulations.

To ascertain if an accumulator may fall under the requirements of a pressure vessel, download this [Hyspecs Accumulator Regulations Guide here](#). Note that this a guide only and regulations may be subjective.

Along with accumulators Hyspecs also stocks [EPE accumulator unloading valves / safety blocks \(B20FB315GRP\)](#) which are a requirement under the regulations. Accumulator unloading valves provide relief protection and a safe means of unloading the accumulator when the machine is not in operation. This is especially important for when servicing of hydraulic equipment with accumulators attached is concerned. Download the full EPE AS Accumulator catalogue [here](#).



The B20FB315GRP has a manual dumping mechanism and Hyspecs has designed and manufactured a bolt on block (**HS9551AS** with cartridge **SV08-21**) to give the B20FB315GRP an electrical unloading option, of accumulator pressure when the machine is shut down.

HYDRAULIC SPECIALTIES LTD.

P.O. Box 58-655 Greenmount, Auckland
Tel: +64 9 274-9985
Fax: +64 9 274-4441
32 Crooks Road, East Tamaki
Auckland, New Zealand

Web Site: www.hyspecs.co.nz
E-mail: hyspecs@hyspecs.co.nz

P.O. Box 7493 Sydenham, Christchurch
Tel: +64 3 366-1872
Fax: +64 3 366-1431
40 Durham Street, Sydenham
Christchurch, New Zealand

For more information on pressure vessel requirements, accumulators and their associated valving, talk with one of our sales engineers today by using the numbers in the left hand column or drop as an email by [clicking here](#).

Staff News

One of our Auckland based Sales Engineers, Guiomar Fernandez has taken maternity leave. Guiomar was looking after the Taranaki and Wanganui regions which will in the interim be looked after by Mark Featherstone (N.I. Sales Manager). We wish Guiomar well with her delivery and look forward to having her back with us in the future.

We have taken on two new employees in our Christchurch branch:

To bolster our service department we've hired a new Fitter/ Turner, Aidan Sheard. Aidan has spent time working in Scotland and England, with various jobs including profile burner, forklift driver, steel and sheet metal fabrication and production line work. Prior to this he completed an apprenticeship in Mechanical Engineering and Machining and Tool Making in Christchurch with Skellerup.

Julien Jesson our new stock controller allows our Sales and Power Transmission Technician, Andrew Miskimmin more time on the road. Julien Jesson joined Hyspecs early in 2009, coming straight from school (NCEA achieved) to his first full time position.

Julien's roll is mainly receiving and despatching and will also take on stock control as he becomes more familiar with the products.



Guiomar Fernandez



Aidan Sheard



Julien Jesson

For more staff profiles [click here](#).

New Hytrans Website - www.Hytrans.co.nz

Hytrans (Hyspecs Transmissions Ltd) provides power transmission solutions - New Zealand wide.

Based on our other sites [Hyspecs](#) and [Hytech](#), we've developed a new website for Hytrans. The company theme has been maintained throughout, so that customers are familiar with the layout, as the companies' products are complimentary.

Along with company information, stocked product lines are available for searching and the downloads section contains some useful tools for the designer. Browse through our products by category, brand or use the in-built search function to find what you are looking for. If you need more information click on the link found in every page to send an email to one of our experts.



HYDRAULIC SPECIALTIES LTD.



P.O. Box 58-655 Greenmount, Auckland
Tel: +64 9 274-9985
Fax: +64 9 274-4441
32 Crooks Road, East Tamaki
Auckland, New Zealand

Web Site: www.hyspecs.co.nz
E-mail: hyspecs@hyspecs.co.nz

P.O. Box 7493 Sydenham, Christchurch
Tel: +64 3 366-1872
Fax: +64 3 366-1431
40 Durham Street, Sydenham
Christchurch, New Zealand

[Click here](#) to have a look around our brand new Hytrans website.

Remember if your passing by our place pop in for a while. We will happily show you around and I'm sure you will be impressed by the set-up we have, along with our large stock holding - the largest in the country at over \$5 million of product on the shelves! We've always got tea or coffee and a sandwich if you turn up at the right time too!



All the best

Nick Cottier
Marketing & IT Manager
nick@hyspecs.co.nz

HYDRAULIC SPECIALTIES LTD.



P.O. Box 58-655 Greenmount, Auckland
Tel: +64 9 274-9985
Fax: +64 9 274-4441
32 Crooks Road, East Tamaki
Auckland, New Zealand

Web Site: www.hyspecs.co.nz
E-mail: hyspecs@hyspecs.co.nz

P.O. Box 7493 Sydenham, Christchurch
Tel: +64 3 366-1872
Fax: +64 3 366-1431
40 Durham Street, Sydenham
Christchurch, New Zealand